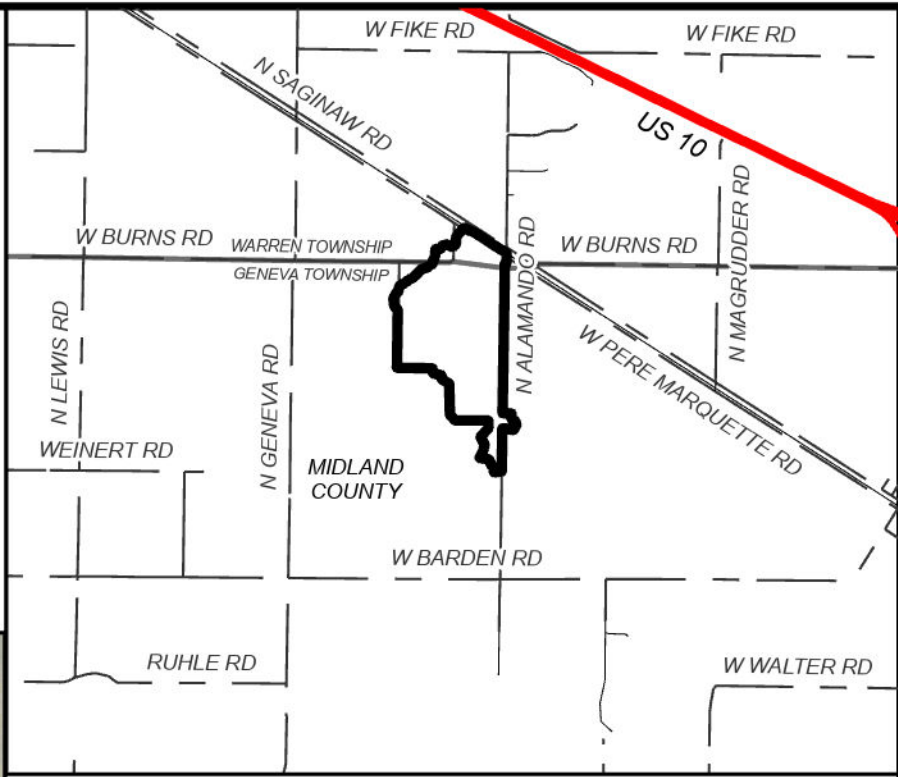
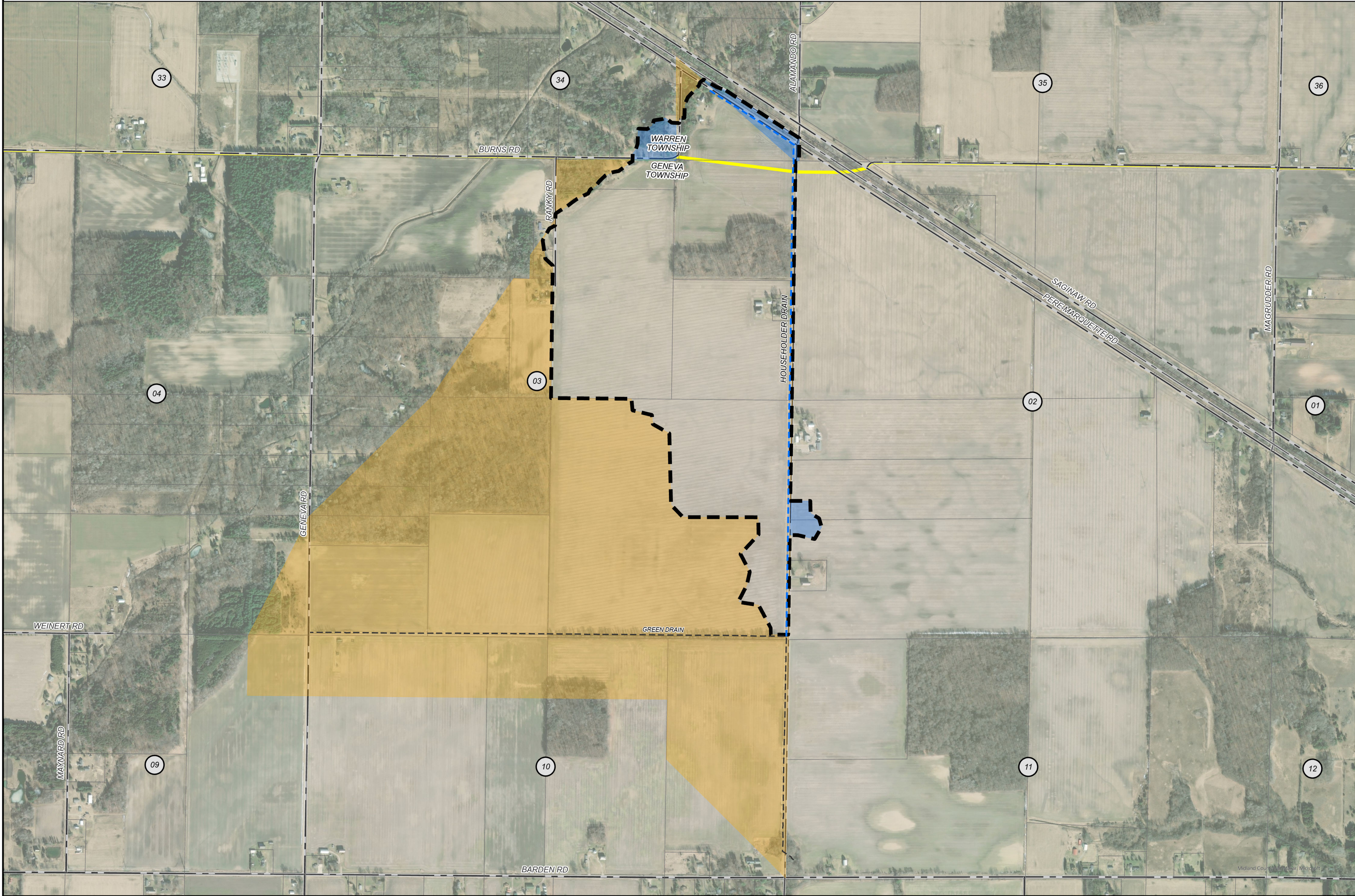


HOUSEHOLDER DRAIN
MIDLAND COUNTY, MICHIGAN
MIDLAND COUNTY DRAIN COMMISSIONER - JOSEPH SOVA



AREA MAP
NOT TO SCALE



LEGEND


- DRAINAGE DISTRICT BOUNDARY
- APPROXIMATE DRAIN LOCATION
- APPROXIMATE LOCATION OF OUTLET WATERCOURSE
- LANDS ADDED
- LANDS REMOVED
- MUNICIPALITY BOUNDARIES
- PARCELS
- STATE ROADS
- COUNTY ROADS
- LOCAL ROADS
- RAILROAD
- SECTION

DRAINAGE DISTRICT BREAKDOWN

MIDLAND COUNTY	
GENEVA TOWNSHIP	211.71 AC.
WARREN TOWNSHIP	22.82 AC.

TOTAL ACREAGE IN DISTRICT 234.53 AC.

LENGTH OF DRAIN
HOUSEHOLDER DRAIN 6,561.09 FT.

BY	MARK	REVISIONS	DATE
THE WORK REPRESENTED BY THIS DRAWING WAS DESIGNED BY THE ENGINEER FOR THIS SPECIFIC APPLICATION AND SPECIFIC LOCATION DESCRIBED HEREON IN ACCORDANCE WITH THE CONDITIONS PREVALENT AT THE TIME THE DESIGN WAS DONE. THE ENGINEER DOES NOT GUARANTEE AND WILL NOT BE LIABLE FOR ANY OTHER LOCATION, CONDITION, DESIGN OR PURPOSE.			
HOUSEHOLDER DRAIN MIDLAND COUNTY, MICHIGAN			
DRAINAGE DISTRICT MAP			
		SAGINAW'S OFFICE 230 S Washington Ave Saginaw, MI 49807 Tel: 989-754-4747 www.SpicerGroup.com	
DE. BY: LLG	CH. BY: LDO	PROJECT NO.	
DR. BY: LLG	APP. BY: LDO	137529SG2024	
STDS.	SHEET 1	OF 1	DR 1
DATE: MARCH 2025	FILE NO.		
SCALE: 1"=500'			